



# Annual Listing of Transportation Project Obligations Federal Fiscal Year 2005 (October 1, 2004 to September 30, 2005)



March 2006

**Roanoke Valley Area**  
**MPO** METROPOLITAN  
PLANNING  
ORGANIZATION

Roanoke  
Valley  
Alleghany  
Regional  
Commission



The Roanoke Valley Area Metropolitan Planning Organization (RVAMPO) Transportation Improvement Program (TIP) is a listing of transportation projects over a three year period, which will be funded, at least in part, with funds from the Federal Highway Administration and/or Federal Transit Administration.

Our current TIP was approved in August 18, 2004. It was amended on the following dates:

- February 24, 2005,
- April 28, 2005,
- December 1, 2005; and,
- February 23, 2006.

In addition the TIP was adjusted on November 10, 2005 and January 24, 2006. Adjustments deal with minor changes or corrections and do not require the formal process of a TIP amendment.

The TIP covers the years 2005 through 2007. The TIP lists for each project the estimated cost for each phase of the project. Project schedules often change as a result of personnel or consultant availability for design activities, or changes in budget resource availability. Thus, the TIP does not always yield an up-to-date picture of actual project expenditures. To ensure that the public will have an accurate understanding of how federal funds are actually being spent on transportation projects, Congress included in the Transportation Equity Act for the 21st Century (1998) and extended in the Safe, Accountable, Flexible, Efficient Transportation Equity Act: A Legacy for Users (SAFETEA-LU) of 2005, a requirement that the organizations responsible for approving the Transportation Improvement Program publish an annual listing of project obligations.

### **What are "project obligations"?**

A good way to think of “obligations” is as setting up a checking account for a specific purpose and then making an initial deposit. In order to begin work on any phase of a transportation project, federal funds must be obligated. This means that the money is set aside for that particular piece of work, and then can be used to pay bills. The project expenses may be bills from a design consultant, a construction contractor, or payroll costs for Virginia Department of Transportation (VDOT) employees working on the project.<sup>1</sup>

### **Do project obligations mean the work is underway?**

This is not always the case. Project accounts are set up, particularly for the initial phases of a project, to enable the work. It may take a while, for example, to select and hire a design consultant, and have them actually begin work.

---

<sup>1</sup> This and other portions of narrative are based on: Poughkeepsie-Dutchess County Transportation Council “Where the Federal Transportation Dollars are Spent: Annual Listing of Project Obligations FFY 2004 October 1, 2003 to September 31, 2004.  
<http://www.co.dutchess.ny.us/CountyGov/Departments/Planning/2004ProjectObligations.pdf>

**Organization of this document:**

The next page of this document is a map representing approximate locations of projects in the FFY 2005 Annual Listing of Projects. *Please use zoom tool (shaped like a magnifying glass with a + in the center) to zoom in on street names and Map # labels that correspond to Map #s in the following tables.*

The remaining pages consist of tables of project funding information organized by funding category (i.e. Interstate, Primary, Secondary and Urban). The project and map are linked by a Map # which is listed along with the project description in the table:

Roanoke Valley Area Metropolitan Planning Organization						
Federal Obligated Funds: 10/01/2004 - 09/30/2005						
Funding Source/Amount						
Jurisdiction	Project Description	IM/NH	STP	CMAQ	BROS	DEMO
<b>Interstate</b>						
Botetourt County	BOTETOURT: .28 M S RT 648-.79 M N INT 779/220 , ADVANCE RW FOR PARCELS 1-10 (0812249:53097) - <b>Map #1</b>	(\$1,087,825)	\$0	\$0	\$0	\$0
Roanoke County	Roanoke: Fr 0.1 Miles S Int Rtes 419 & 780 - 0.1 Miles N Int Rtes 419 & F-071 Turn Lanes & Signals (0812263:63707) - <b>Map #2</b>	\$51,632	\$0	\$0	\$0	\$0
	<b>INTERSTATE SUBTOTAL</b>	<b>(\$1,036,193)</b>	<b>\$0</b>	<b>\$0</b>	<b>\$0</b>	<b>\$0</b>
	<b>INTERSTATE TOTAL</b>	<b>(\$1,036,193)</b>				
<b>Miscellaneous</b>						
	No projects identified in the MPO Area					
	<b>MISCELLANEOUS SUBTOTAL</b>					
	<b>MISCELLANEOUS TOTAL</b>	<b>\$0</b>				
<b>Primary</b>						
	No projects identified in the MPO Area					
	<b>PRIMARY SUBTOTAL</b>					
	<b>PRIMARY TOTAL</b>	<b>\$0</b>				
<b>Secondary</b>						
Roanoke County	Roanoke Co: Route 720 - Fr: 0.05 Mi. W. Rte. 687 To: Rte. 419 - Reconstruction (5128202:15189) - <b>Map #3</b>	\$0	\$246,400	\$0	\$0	\$0
Roanoke County	Roanoke Co: Rte. 679 - Fr: Rte. 766 To: 0.04 Mi. E. Rte. 678 - Reconstruction (5128204:58279) - <b>Map #4</b>	\$0	\$156,896	\$0	\$0	\$0
Roanoke County	Roanoke Co: Rte. 688 - Fr: 0.09 Mi. S. Rte. 221 To: 0.15 Mi. S. Rte. 934 - Reconstruction (5128205:15190) - <b>Map #5</b>	\$0	\$132,475	\$0	\$0	\$0
Roanoke County	Roanoke Co: Rte. 613 - Fr: 0.1 Mi. S. Rte. 904 (Starkey Rd) To: Rte. 1640 (Pine Acres Lane) - Reconstruct & Widen Drainage Str. (5128206:18723) - <b>Map #6</b>	\$0	\$95,909	\$0	\$0	\$0
Roanoke County	ROANOKE COUNTY; RTE 1662 (INT. OF RTE 1663 TO INT. OF RTE 419) RECONSTRUCTION & REPLACE BRIDGE OVER MUD LICK CK (5128207:15187) - <b>Map #7</b>	\$0	\$0	\$0	\$598,934	\$0

Roanoke Valley Area Metropolitan Planning Organization						
Federal Obligated Funds: 10/01/2004 - 09/30/2005						
Funding Source/Amount						
Jurisdiction	Project Description	IM/NH	STP	CMAQ	BROS	DEMO
Botetourt County	BOTETOURT COUNTY; RTE 738 (0.07 MILE SOUTH RTE 607 NORTH TO 0.08 MILE NORTH RTE 607 NORTH) BRIDGE REPLACEMENT (5128208:17993) - <b>Map #8</b>	\$0	\$0	\$0	\$48,000	\$0
Botetourt County	Botetourt Co.: Rte. 779 - Fr: 0.19 Mi. E. Rte. 672 E. To: 0.24 Mi. W. Rte. 672 E. - Int. Improvements & Bridge over Tinker Creek (5128210:52803) - <b>Map #9</b>	\$0	\$435,600	\$0	\$0	\$0
Botetourt County	BOTETOURT COUNTY; RTE 652 (0.1 MILE WEST RTE 653 TO 0.1 MILE EAST RTE 653) RECONSTRUCTION (CURVE IMPROVEMENTS) (5128221:18721) - <b>Map #10</b>	\$0	\$82,960	\$0	\$0	\$0
Botetourt County	BOTETOURT COUNTY; RTE 652 (0.1 MILE WEST RTE 658 SOUTH TO 0.1 MILE EAST RTE 658 SOUTH) RECONSTRUCTION (CURVE IMPROVEMENTS) (5128222:18719) - <b>Map #11</b>	\$0	\$51,200	\$0	\$0	\$0
	<b>SECONDARY SUBTOTAL</b>	<b>\$0</b>	<b>\$1,201,440</b>	<b>\$0</b>	<b>\$646,934</b>	<b>\$0</b>
	<b>SECONDARY TOTAL</b>	<b>\$1,201,440</b>				
<b>Urban</b>						
Roanoke	SALEM:WCL - EDGEWOOD ST SW, RW,RELOC.ASSIST&UTILS FOR 5 LANE RD (5128160:10576) - <b>Map #12</b>	\$0	(\$849,065)	\$0	\$0	\$0
Roanoke	ROANOKE: COLONIAL AVENUE - BRANDON AVENUE, PE FOR NEW CONSTRUCTION (5128178:19029) - <b>Map #13</b>	\$0	\$856,800	\$0	\$0	\$0
Roanoke	ROANOKE: AT LICK RUN GREENWAY, PE TO CONST BICYCLE/PED TRAIL (5128182:18773) - <b>Map #14</b>	\$0	\$856,975	\$0	\$0	\$0
Roanoke	CITY OF ROANOKE: HISTORIC HOTEL DUMAS - RENOVATION OF HOTEL FOR USE AS AN ARTISTIC AND CULTURAL CENTER - INCLUSIVE OF ALL PHASES (5128193:70300) - <b>Map #15</b>	\$0	\$40,000	\$0	\$0	\$0
Roanoke	City of Roanoke: First Street Approaches & Bridge over NS Railway Yards from Salem Avenue to Centre Avenue (5128195:72794) - <b>Map #16</b>	\$0	\$180,263	\$0	\$0	\$0
Roanoke	CITY OF ROANOKE - 10TH STREET - CONSTRUCT 2-STAGE CROSSING W/WARNING DEVICES FROM LICK RUN STREET TO 170 FT. S SYRACUSE AVE (5128197:71725) - <b>Map #17</b>	\$0	\$4,500	\$0	\$0	\$0

Roanoke Valley Area Metropolitan Planning Organization						
Federal Obligated Funds: 10/01/2004 - 09/30/2005						
Funding Source/Amount						
Jurisdiction	Project Description	IM/NH	STP	CMAQ	BROS	DEMO
Roanoke	CITY OF ROANOKE: RIVERLAND RD; INTERSECTION IMPROVEMENT @ BENNINGTON ST. (5128198:71741) - <b>Map #18</b>	\$0	\$96,000	\$0	\$0	\$0
Roanoke	CITY OF ROANOKE - CITY-WIDE SIGNAL UPGRADES (5128199:71740)	\$0	\$114,400	\$0	\$0	\$0
Roanoke	CITY OF ROANOKE - THE . WINSTON LINK MUSEUM - DESIGN AND CONSTRUCTION OF VARIOUS MUSEUM COMPONENTS - INCLUSIVE OF ALL PHASES (5128200:75255) - <b>Map #19</b>	\$0	\$55,000	\$0	\$0	\$0
Roanoke	City of Roanoke: 13th Street & Hollins Road - Fr: Orange Avenue To: Dale Avenue - 4-Lane (Incl. Bridge over N&W RR and Lick Run) (5128201:688) - <b>Map #20</b>	\$0	\$580,000	\$0	\$0	\$0
Roanoke	City of Roanoke: Historic Hotel Dumas-Renovation of Hotel for Use as an Artistic and Cultural Center (5128212:72180) - <b>See Map #15</b>	\$0	\$4,000	\$0	\$0	\$0
Salem	City of Salem: Route 11 - At Route 419 (Electric Road) - Intersection Improvements (5128203:52076) - <b>Map #21</b>	\$0	\$1,509,513	\$0	\$0	\$0
Salem	City of Salem: Route 11 - At Route 419 (Electric Rd) Intersection Improvements (5128211:52076) - <b>See Map #21</b>	\$0	\$0	\$0	\$318,400	\$0
Salem	CITY OF SALEM - PEDESTRIAN/BICYLCE TRAIL - CONSTRUCTION OF 7 MI BICYCLE/PEDESTRIAN PATH ALONG THE ROANOKE RIVER IN ROANOKE COUNTY (5129001:56409) - <b>Map #22</b>	\$0	\$475,000	\$0	\$0	\$0
	<b>URBAN SUBTOTAL</b>	<b>\$0</b>	<b>\$3,923,386</b>	<b>\$0</b>	<b>\$318,400</b>	<b>\$0</b>
	<b>URBAN TOTAL</b>	<b>\$3,923,386</b>				
	<b>TOTAL ALL FUNDS</b>	<b>(\$1,036,193)</b>	<b>\$5,124,826</b>	<b>\$0</b>	<b>\$965,334</b>	<b>\$0</b>

FEDERAL FUNDS OBLIGATED - OCTOBER 1, 2004 - SEPTEMBER 30, 2005

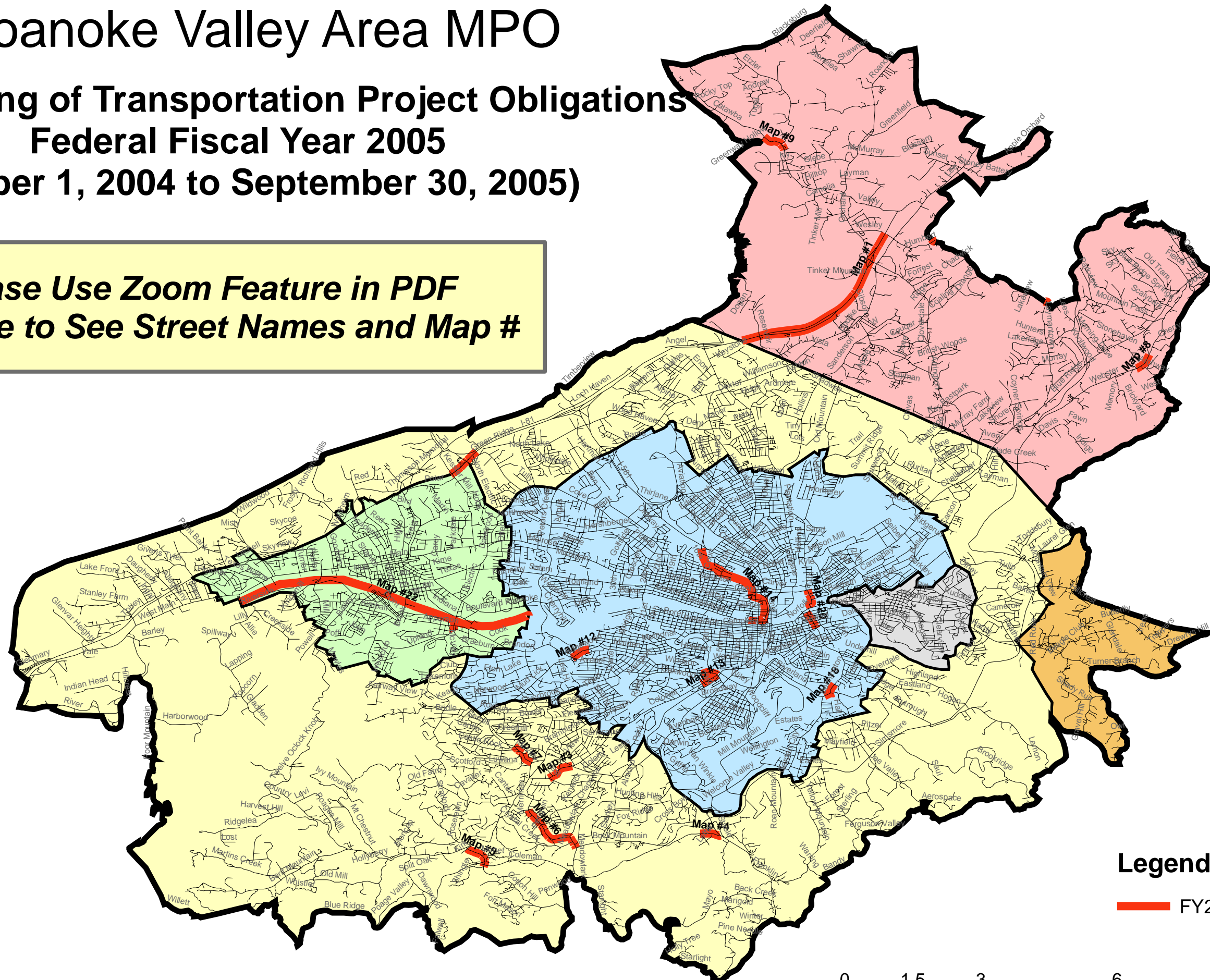
MPO	FEDERAL FUNDS OBLIGATED	YEAR	CMAQ	RSTP	SSTP	TOTAL
<b>ROANOKE MPO</b>						
<b>VALLEY METRO</b>						
	Preventive Maintenance	Flexed to FTA			\$ 163,000	\$ 163,000
	Replacement Vans	Flexed to FTA			\$ 80,000	\$ 80,000
	Rehab. Facilities	Flexed to FTA			\$ 40,006	\$ 40,006
	Support Vehicles	Flexed to FTA			\$ 28,000	\$ 28,000
	ADP Hardware/Software	Flexed to FTA			\$ 12,000	\$ 80,000
	Shop Equipment	Flexed to FTA			\$ 16,000	\$ 16,000
<b>RADAR</b>						
	ADP Hardware/Software	Flexed to FTA			\$ 80,000	\$ 80,000
	Replacement Vans	Flexed to FTA			\$ 160,000	\$ 160,000
<b>TOTAL</b>					\$ 579,006	\$ 579,006



# Roanoke Valley Area MPO

## Annual Listing of Transportation Project Obligations Federal Fiscal Year 2005 (October 1, 2004 to September 30, 2005)

**Please Use Zoom Feature in PDF  
Software to See Street Names and Map #**



### Legend

 FY2005 Annual Obligations

