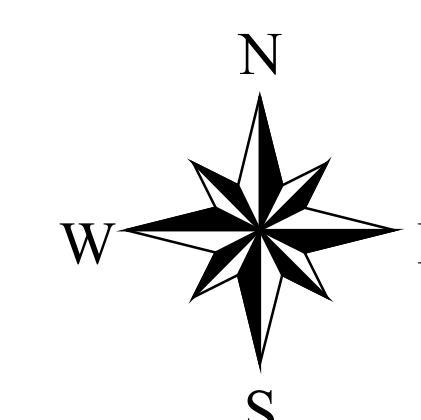
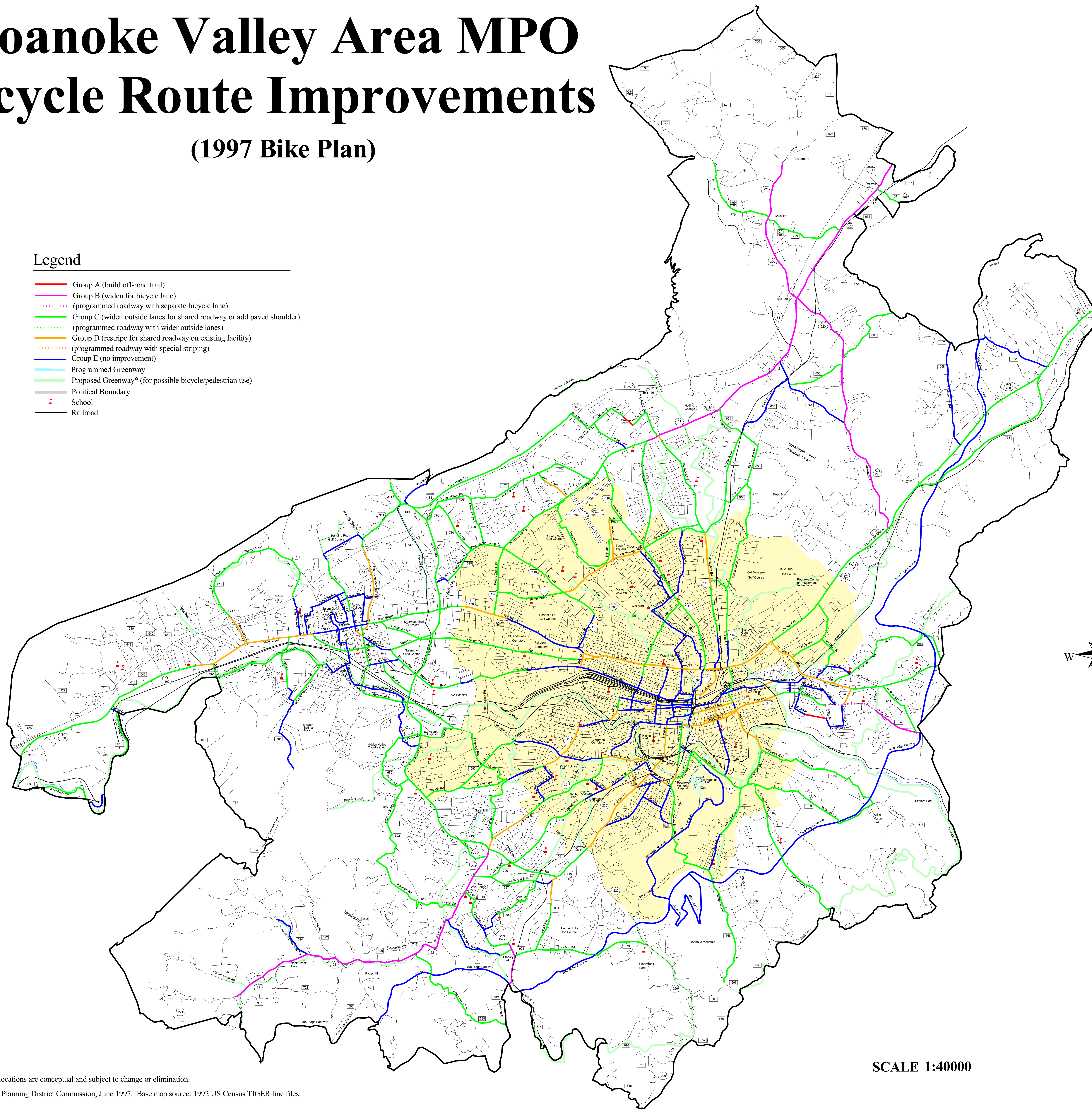


Roanoke Valley Area MPO Bicycle Route Improvements (1997 Bike Plan)

Legend

- Group A (build off-road trail)
- Group B (widen for bicycle lane)
- - - (programmed roadway with separate bicycle lane)
- Group C (widen outside lanes for shared roadway or add paved shoulder)
- - - (programmed roadway with wider outside lanes)
- Group D (restripe for shared roadway on existing facility)
- - - (programmed roadway with special striping)
- Group E (no improvement)
- Programmed Greenway
- Proposed Greenway* (for possible bicycle/pedestrian use)
- Political Boundary
- + School
- Railroad



The Roanoke Valley Area MPO Bikeway Plan

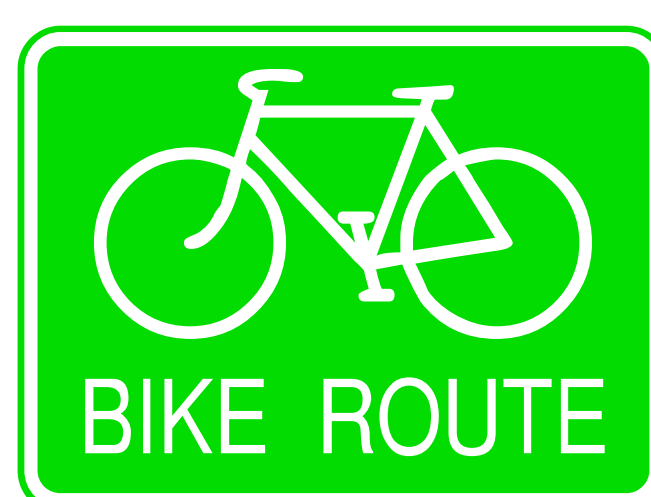
This map is part of a plan which will serve as an advisory document and a guideline to assist local governments in the planning and development of a multi-modal friendly network. Their adoption indicates support for the creation of a bicycle network in the Roanoke Valley, but it does not constitute a requirement for accommodation. Each roadway project will be subject to its own public hearing process. The final design of any roadway project should be determined after the public hearing. Most construction costs for the projects will originate from a locality's state highway funds or other local sources. The Roanoke Valley Bikeway Plan is regional in its coverage, but the cost of building bicycle accommodations will be borne by each individual locality as a portion of their overall budget. The Virginia Department of Transportation also requires that for state funding to be used for bicycle accommodation along a roadway, it must be identified in a bikeway plan.

This map is part of a bikeway plan. It is not intended as a stand alone document. It does not show current bikeways in the Roanoke Valley. This map does not imply that any road or segment is safer or more suitable for cycling than any other road or segment. The Fifth Planning District Commission is not responsible for any errors on this map or any actions made based on this map.

Additional copies of the Roanoke Regional Bikeway Plan and this map can be obtained from the Fifth Planning District Commission
PO Box 2569
Roanoke, VA 24010
(540) 343-4417

BIKEWAY MAP

Roanoke Valley Area MPO
Bikeway Plan



prepared by the
Roanoke Valley Area
Metropolitan Planning Organization
a division of the
Fifth Planning District Commission
PO Box 2569
Roanoke, VA 24010
(540) 343-4417

June 1997

SCALE 1:40000

*Proposed greenway locations are conceptual and subject to change or elimination.

Prepared by the Fifth Planning District Commission, June 1997. Base map source: 1992 US Census TIGER line files.