

DISABLED INDIVIDUALS RVAMPO Demographic Profile



Introduction

The staff of the Roanoke Valley Area Metropolitan Planning Organization (RVAMPO), in addition to revising the MPO's Title VI and Public Involvement policies, is generating a series of demographic profiles to identify special needs populations in the region. Disabled citizens represent one such special needs group within the RVAMPO region.

Before delving into statistical figures, some background information is in order. Federal non-discrimination authorities provide for the protection of several special needs populations from either intentional or unintentional discrimination by any federal agency or recipient/sub-recipient of federal funds. Specifically, Section 504 of the Rehabilitation Act of 1973 prohibits recipients of federal financial assistance from intentionally or unintentionally discriminating against anyone on the basis of disability. It states that “[n]o Qualified Handicapped Person shall, be solely by reason of his handicap, be excluded from participation in, be denied the benefits of, or be subjected to discrimination under any program or activity that receives or benefits from Federal financial assistance.” This piece of legislation lends federal protections to the disabled in addition to the groups of race, color, and national origin already protected by Title VI of the Civil Rights Act of 1964.

What does this mean to the RVAMPO?

The RVAMPO must take steps to ensure that it is not unintentionally discriminating against the disabled in any of its activities. Staff must ensure that meetings are held in locations that are accessible to the physically disabled. Staff must also ensure that the statewide TTY/TTD number and the toll free voice line are advertised in all public notices so that those with sensory disabilities are able to communicate with staff and to comment on the plans, projects, and/or activities of the RVAMPO. Finally, staff must be proactive in identifying potential needs of the disabled in arranging public meetings and must provide reasonable accommodation if and when a new need is identified.

Information of the type included in this demographic profile can be used to better plan the region's transportation network for such special needs populations. Most of all, this information reveals just how necessary special accommodations (wheelchair accessible transit, for instance) are in the regional transportation network. In short, knowing how large the region's disabled population is and what sorts of disabilities the population has can be very useful and vital in planning for the region.

Table 1 can be used for reference and for general information regarding the size and character of the RVAMPO's population of disabled individuals. It shows that there are significant proportions of individuals with disabilities in all age groups. Indeed, it shows that a significant proportion of the citizens in the RVAMPO area have at least one disability.

Table 1: Individuals with a Disability

	Population 5 to 20 Years			Population 21 to 64 Years			Population 65 and Over		
	Total	With Disability	% With Disability	Total	With Disability	% With Disability	Total	With Disability	% With Disability
Bedford County	12,686	1,080	8.5	36,335	6,188	17.0	7,683	3,282	42.7
Botetourt County	6,279	632	10.1	18,072	3,052	16.9	3,991	1,483	37.2
City of Roanoke	18,841	2,302	12.5	53,660	13,229	24.7	14,785	6,630	44.8
City of Salem	5,578	554	9.9	13,570	2,389	17.6	3,844	1,432	37.3
Roanoke County	17,715	1,294	7.3	49,824	7,554	15.2	12,342	4,577	37.1

Source: US Census Bureau

Table 2 shows that among those who are 21 to 64, the majority of the adult, working population and who have a disability, relatively few are employed, suggesting perhaps that their disabilities are so serious as to present an impediment to employment and participation in society.

Table 2: Employment for Those Aged 21 to 64 Years With Disabilities

	Persons With A Disability*	% Employed
Bedford County	6,188	58.8
Botetourt County	3,052	57.7
City of Roanoke	13,229	54.8
City of Salem	2,389	57.0
Roanoke County	7,554	61.0

*Aged 21 to 64 Years

Source: US Census Bureau

Maps 1 through 6 demonstrate the number of disabilities as tallied by the US Census Bureau by block group. The US Census Bureau asks respondents on its long form in Question 16 if they suffer from any of the following long-lasting conditions: (a) blindness, deafness, or a severe vision or hearing impairment, (sensory disability) and (b) a condition that substantially limits one or more basic physical activities such as walking, climbing stairs, reaching, lifting, or carrying (physical disability). In Question 17 on the long form, it is asked if respondents have any physical, mental, or emotional condition lasting 6 months or more that make it difficult to perform certain activities. The four activity categories were: (a) learning, remembering, or concentrating (mental disability); (b) dressing, bathing, or getting around inside the home (self-care disability); (c) going outside the home alone to shop or visit a doctor's office (going outside the home disability); and (d) working at a job or business (employment disability). A map has been made for each of the six categories mentioned above.

MPO staff recommends that the MPO review this profile when preparing plans to ensure that the needs of the disabled are being fully considered and accommodated.

With these measures, the MPO should not only be in compliance with federal non-discrimination provisions dealing with disabilities, but also will be ensuring that all regional citizens are getting their fair chance to voice their opinions and have input into the transportation planning process.

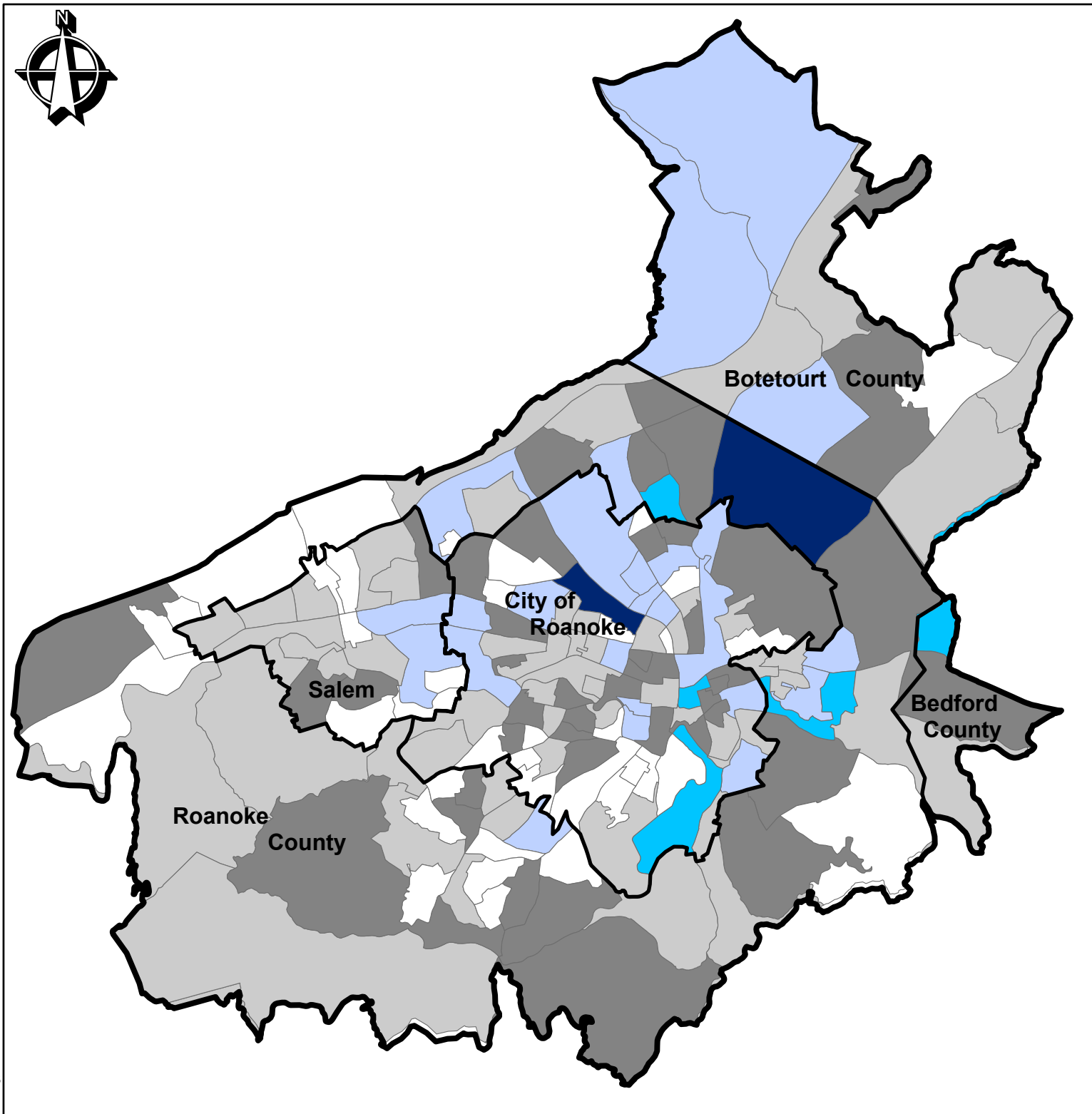
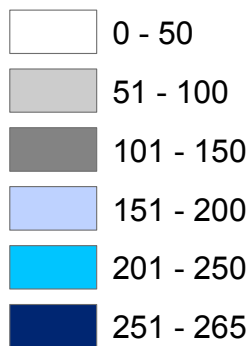
APPENDIX

Demographic Profile



Map 1
Employment Disability
By Block Group
Within MPO
2025 Study Area

Employment Disabilities Tallied

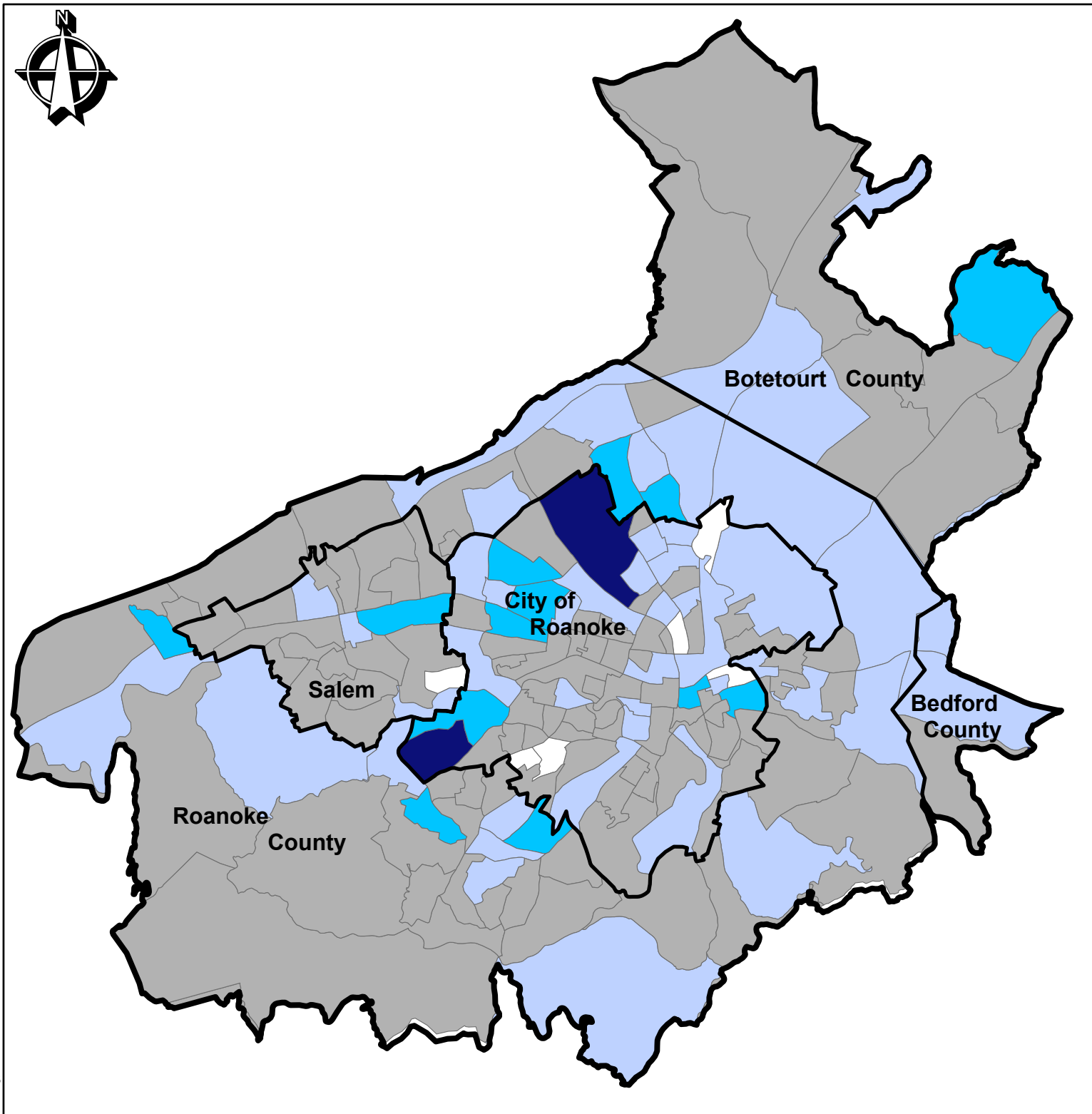
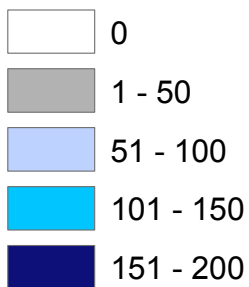


Demographic Profile



Map 2
Sensory Disability
By Block Group
Within MPO
2025 Study Area

Sensory Disabilities Talled

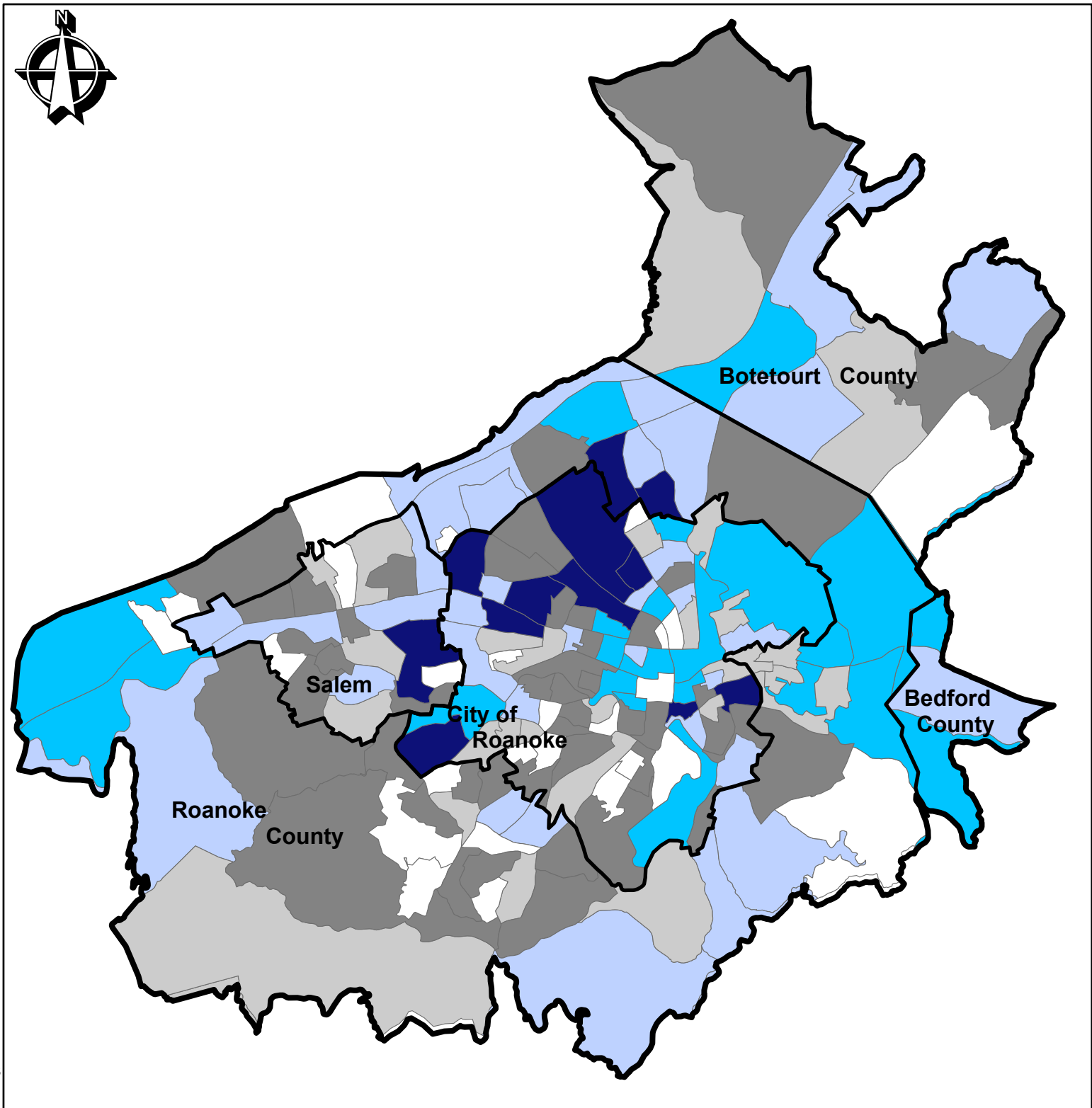
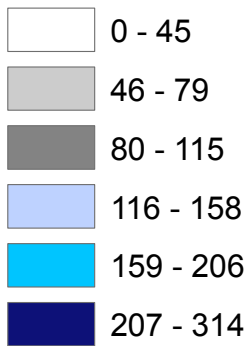


Demographic Profile



Map 3
Physical Disability
By Block Group
Within MPO
2025 Study Area

Physical Disabilities Talled

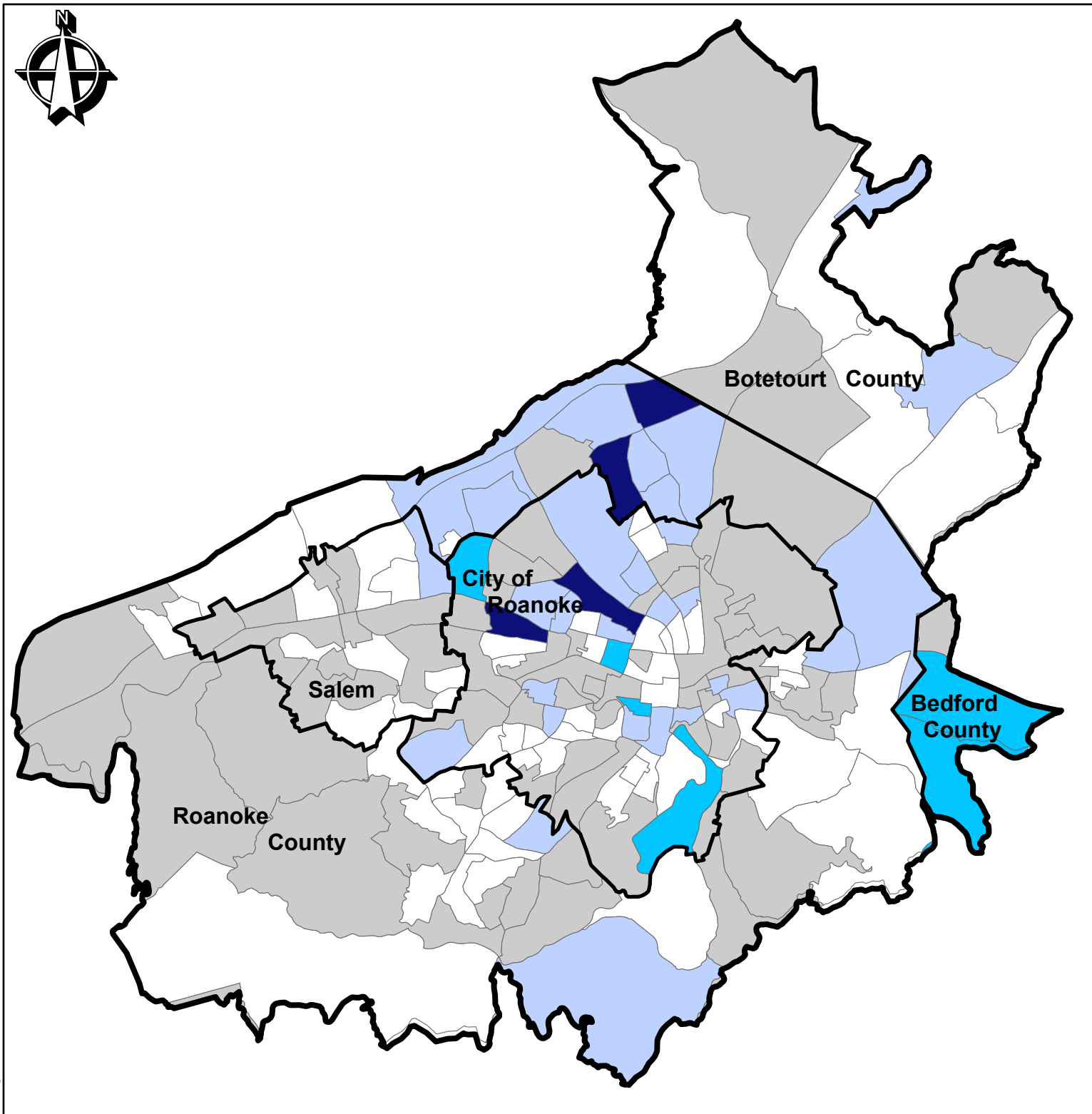
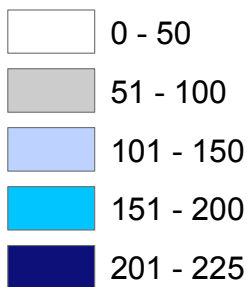


Demographic Profile



**Map 4
Mental Disability
By Block Group
Within MPO
2025 Study Area**

Mental Disabilities Tallied

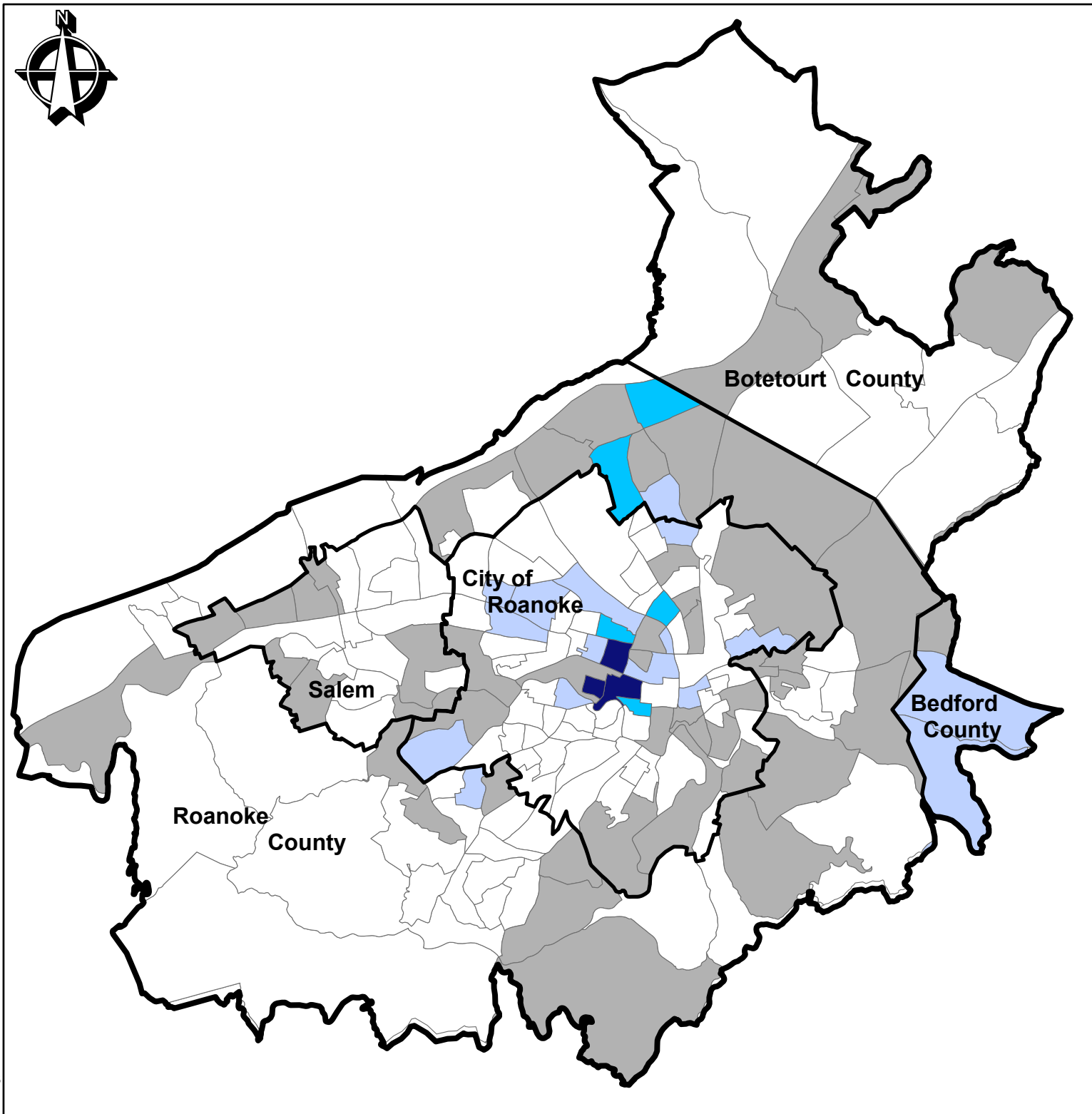
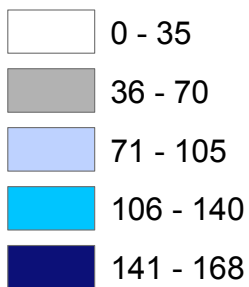


Demographic Profile



**Map 5
Self-Care Disability
By Block Group
Within MPO
2025 Study Area**

Self-Care Disabilities Talled



Demographic Profile

Map 6
Go-Outside-Home
Disability
By Block Group
Within MPO
2025 Study Area



Go-Outside-Home Disabilities Talled

