

# RACE

## RVAMPO Demographic Profile







# **APPENDIX**

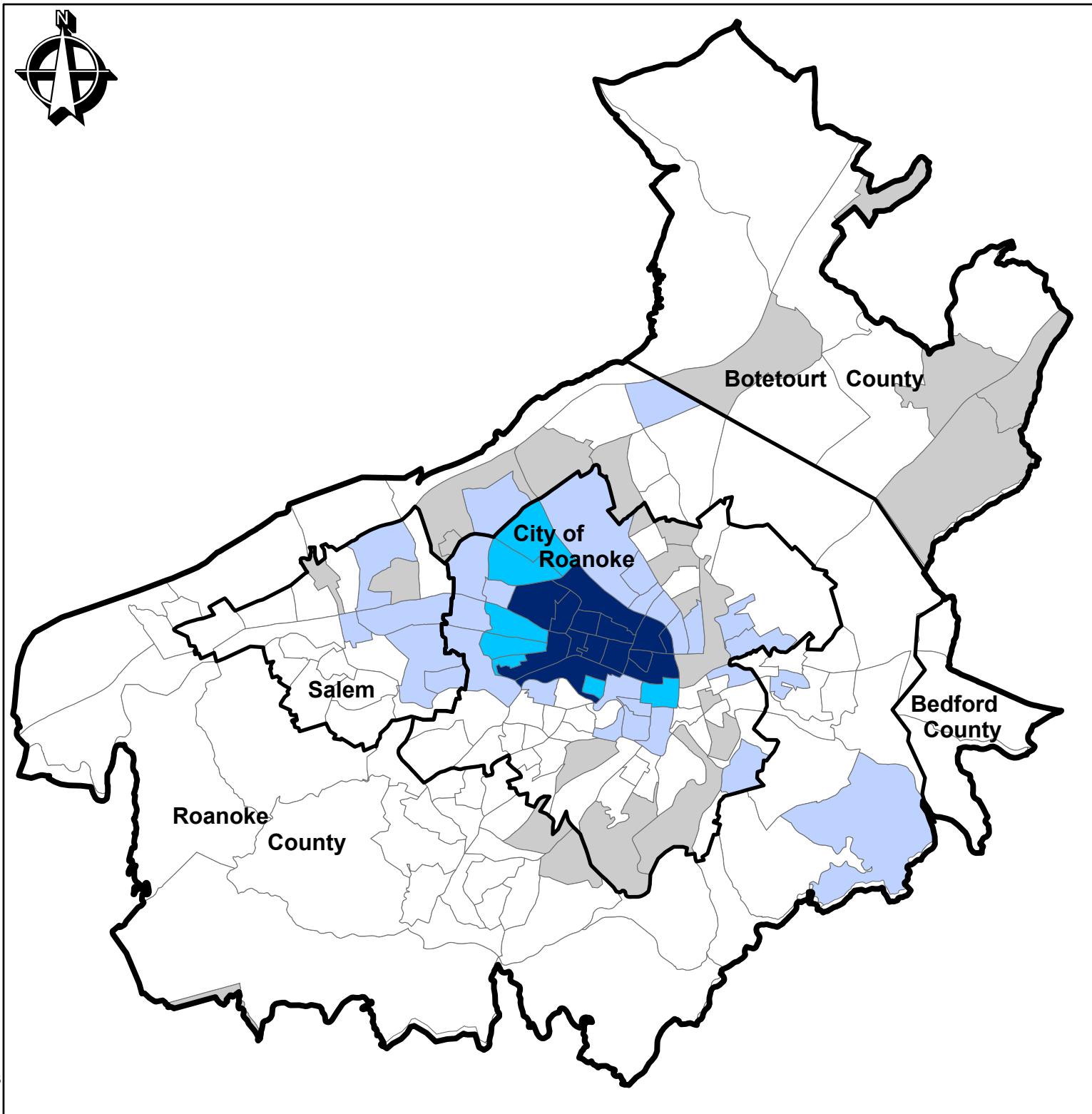
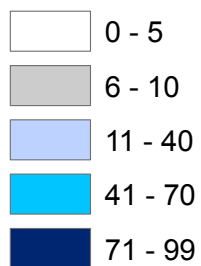
# Demographic Profile



**Map 1**  
**Percent African American**  
**By Block Group**  
**Within MPO**  
**2025 Study Area**

## Legend

### Percent African-American



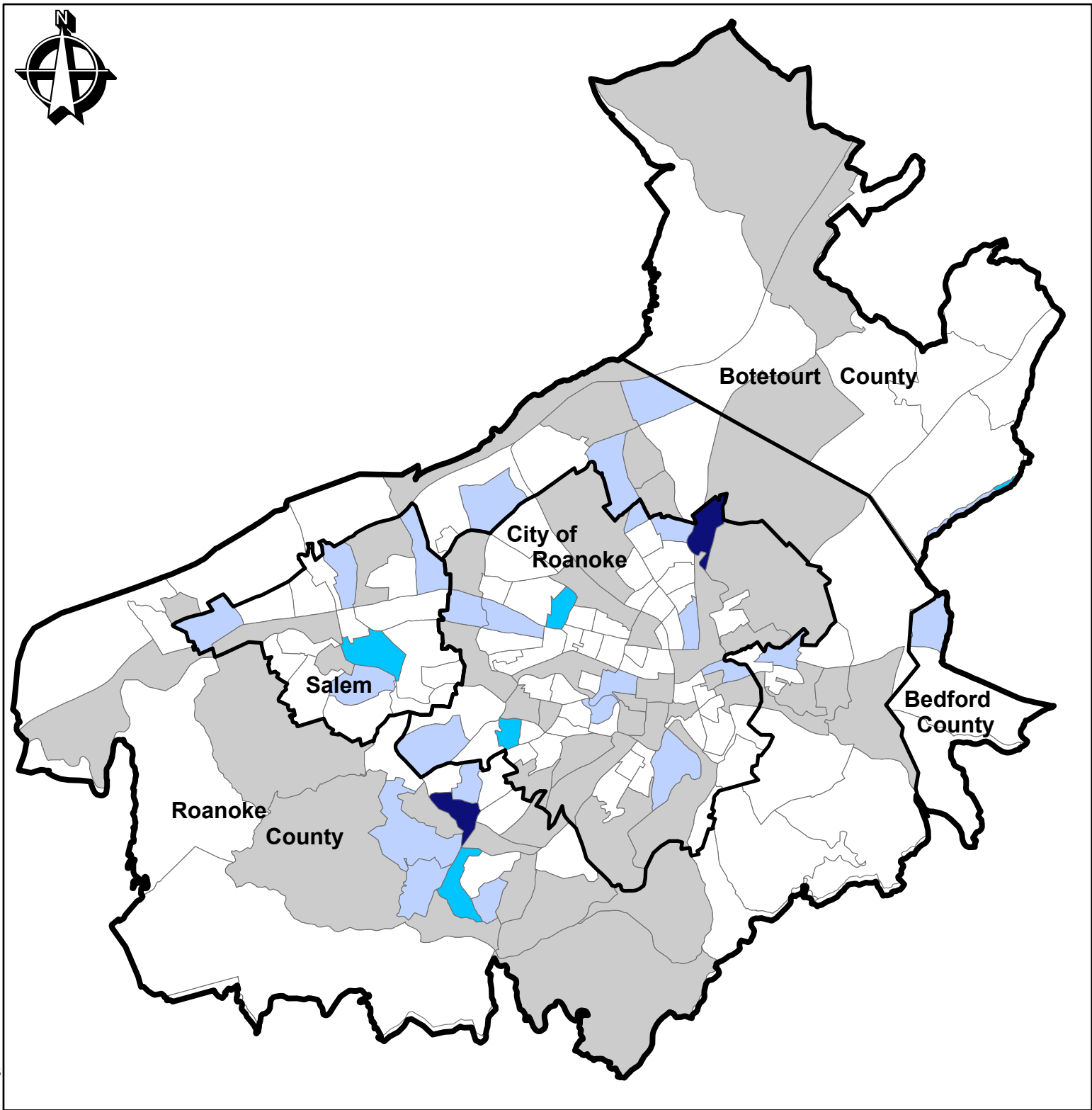
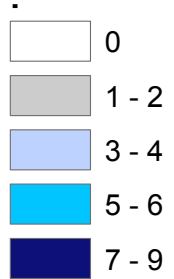
# Demographic Profile

Map 2  
Percent Asian  
By Block Group  
Within MPO  
2025 Study Area



## Legend

### Percent Asian

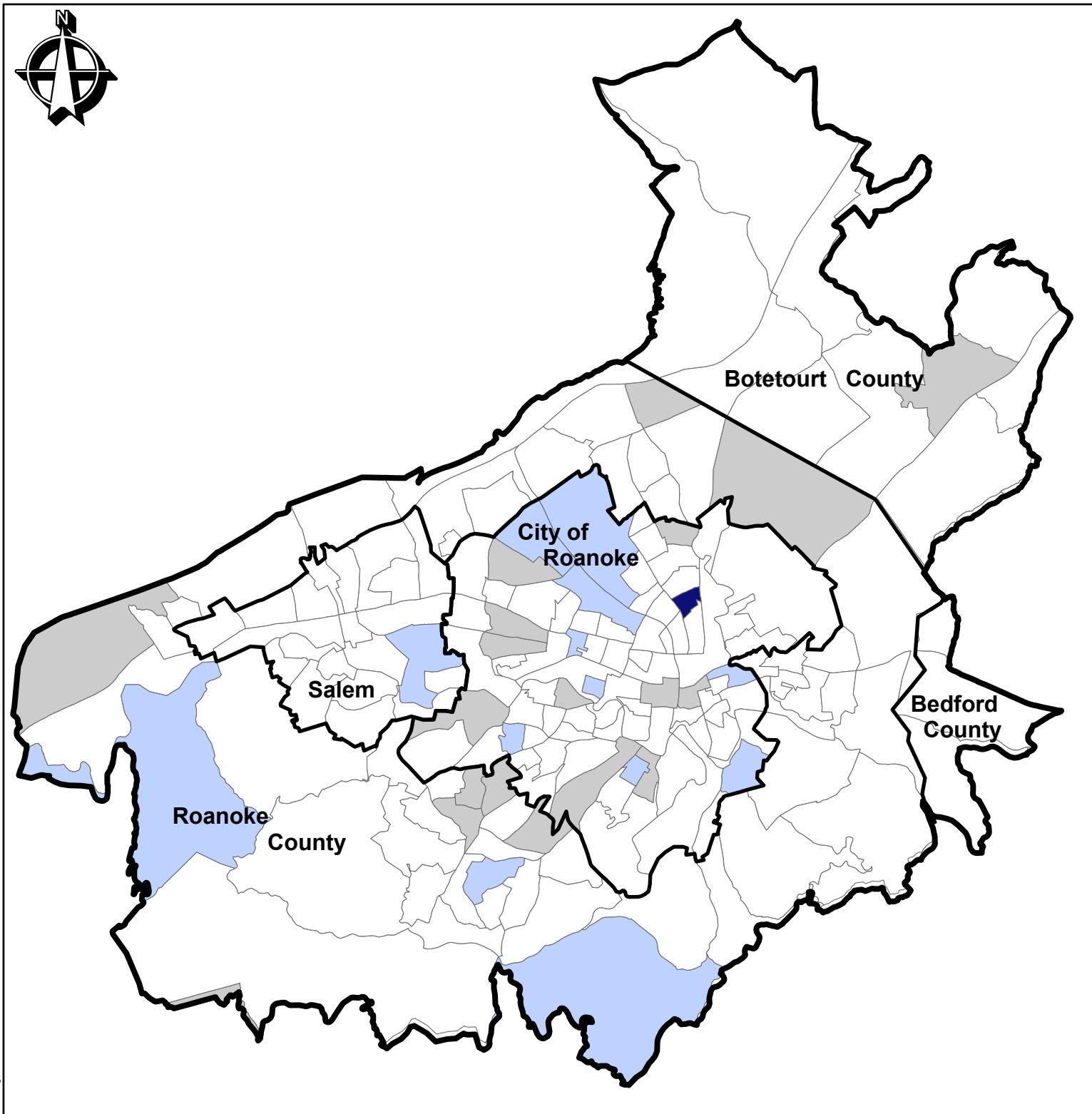
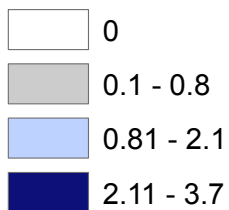


# Demographic Profile



**Map 3**  
**Percent American Indian and Alaska Native**  
**By Block Group**  
**Within MPO**  
**2025 Study Area**

## Percent American Indian and Alaska Native

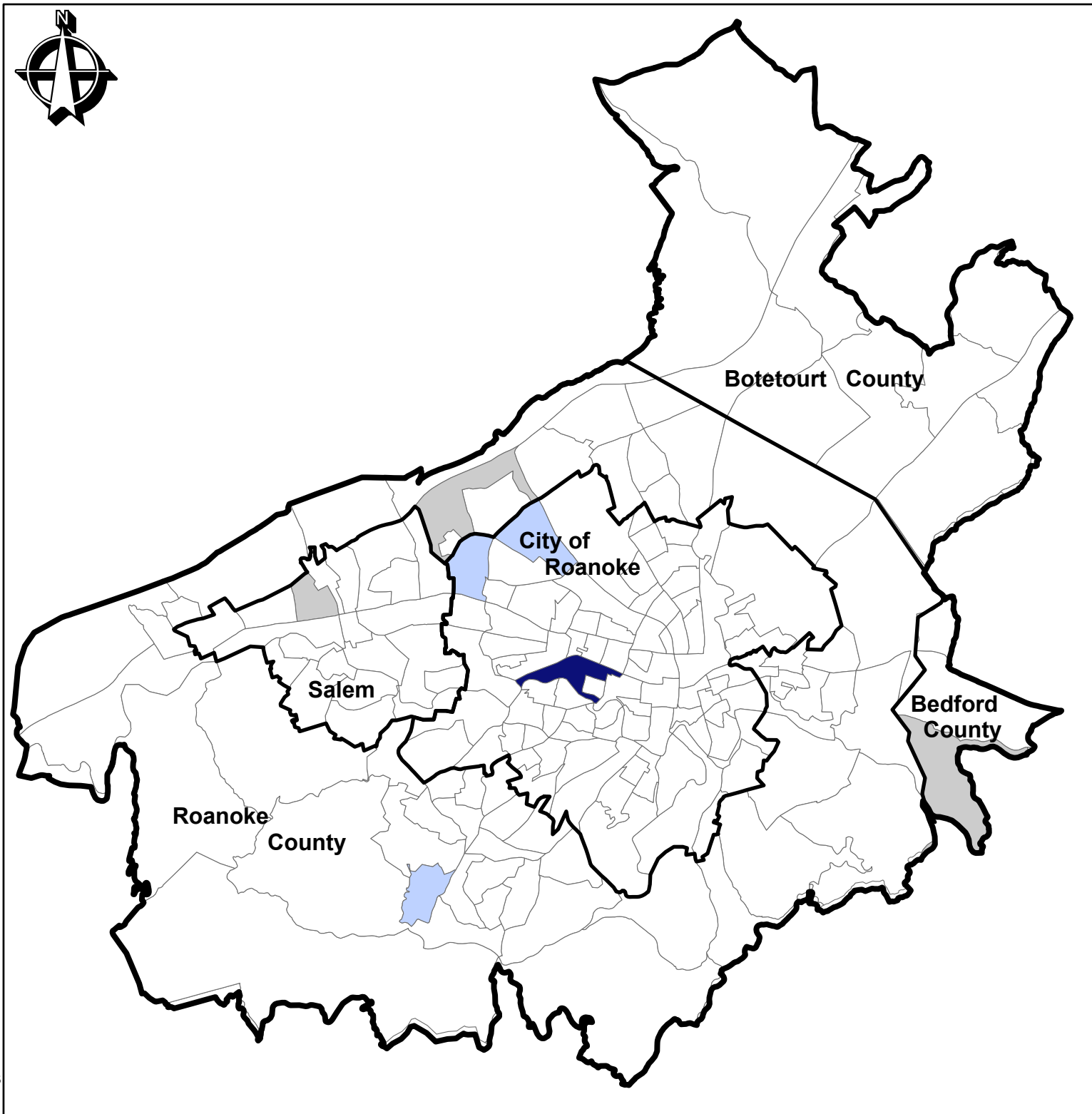
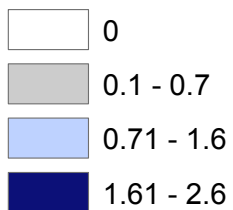


# Demographic Profile



**Map 4**  
**Percent Native Hawaiian**  
**and Other Pacific**  
**Islander**  
**By Block Group**  
**Within MPO**  
**2025 Study Area**

**Percent Native Hawaiian**  
**and Other Pacific Islander**





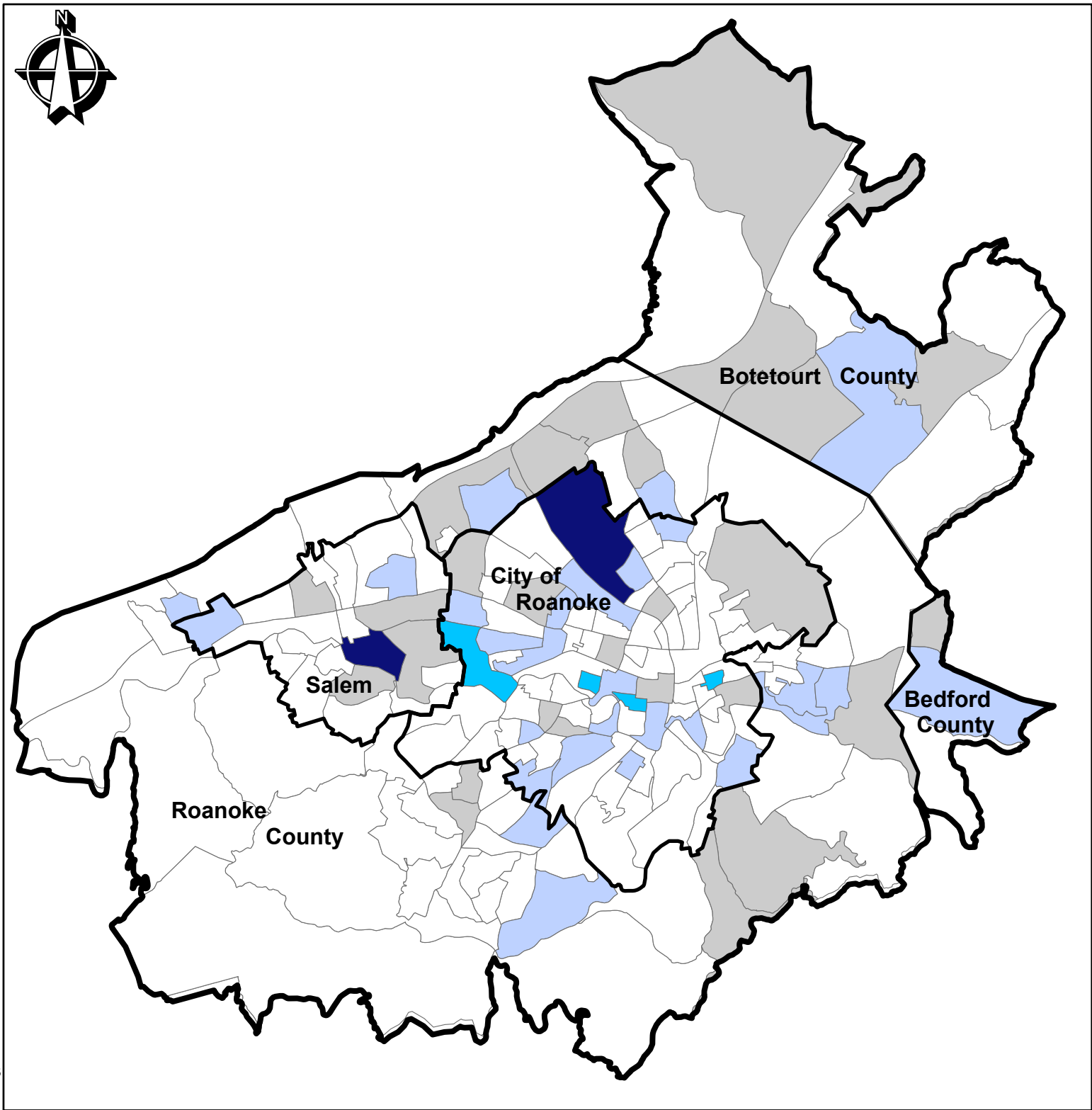
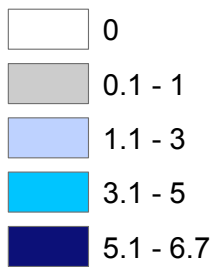
# Demographic Profile



**Map 5**  
**Percent 'Some Other Race'**  
**By Block Group**  
**Within MPO**  
**2025 Study Area**

## Legend

Percent 'Some Other Race'



# Demographic Profile



**Map 6**  
**Percent 'Two Or More Races'**  
**By Block Group**  
**Within MPO**  
**2025 Study Area**

## Legend

Percent 'Two Or More Races'

